

Series Number:

4838

# 4838 Reactor Controller

The **4838 Reactor Controller** is designed to control the temperature in our line of non-stirred pressure vessels. No provision is made for the current or future expansion to control motor stirring speeds or to actuate cooling water. The controller contains the same Primary Temperature Control Module used in the 4848 Controller and provides identical control and communications capabilities. A high/low heater switch feature, as well as a lockout relay and reset for over temperature protection, are also included. The 4838 Reactor Controllers can be enhanced with the addition of either a Pressure Display Module (PDM) or High Temperature Cut Off Module (HTM). An External Temperature Limit Module (ETLM) can be substituted for the HTM.

Features found on the 4838 Reactor Controller are:

- PID programming with Auto-tuning capability for precise temperature control and minimum overshoot
- Ramp and soak programming
- High or low power heater switch
- Lockout relay and reset for over temperature protection.



Parr 4838 Reactor Controller shown with optional HTM Module

## Series 4838 Ordering Guide

A composite identification number to be used when ordering a 4838 Reactor Controller can be developed by combining individual symbols from the separate sections.

Example: A 4838 Reactor Controller, 115V electrical, with optional Pressure Display Module and SpecView Software would be listed as:

**No. 4838-EB-PDM-A3504HC-A1925E4**

A.	B.	C.	C.	C.
Model	Voltage	Options	Options	Options
4838	-EB	-PDM	-A3504HC	-A1925E4

### A Base Model

For Non-Stirred Vessels, PID, Ramp and Soak, Digital Communications and Software

Model No.	Description
4838	Reactor Controller

### B Electrical Supply

-EB	115 VAC
-EE	230 VAC

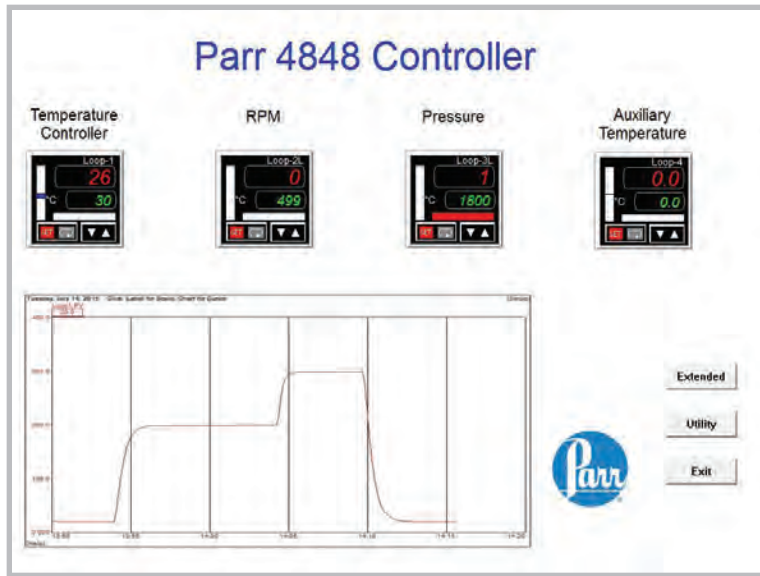
### C Options

-PDM	Pressure Display Module
-HTM	High Temperature Cut Off Module
-ETLM	External Temperature Limit Module
-A1925E4	RS-485 to USB Converter with 30-ft. Cable
-A1925E6	RS-485 to USB Converter, isolated, with 30-ft. Cable
-A3504HC	SpecView Software Package for 4848 and 4838

### Dimensions

Model	Width, in.	Height, in.	Depth, in.
4838	10.19	7.11	7.92

# SpecView® Software for 4848 and 4838 Controllers



SpecView Graphic User Interface for 4848 and 4838 Controllers

## SpecView Software

The unified Modbus communication architecture of the 4848 allows us to bring the power and convenience of SpecView to the 4848 and 4838 Series Controllers. This version of SpecView provides support for up to eight individual loop or limit controllers.

## SpecView Features and Benefits:

- Real time charting
- Datalogging
- Alarm and event logging
- Superior alarm annunciation
- Customizable graphical user interface

This powerful program is highly customizable and configurable to show variables beyond the process value such as heater output, motor output or alarm status. Notes are easily inserted into the interface and data, and the entire interface can be rearranged and edited for the intended process.

## PC Requirements:

SpecView runs on the following Windows operating systems:

- Windows 10, 8, 8.1, & 7; 32 bit & 64 bit  
Note: SpecView does not work on Windows 8 RT (as found on some Microsoft Surface tablets)

## Parr recommends a minimum of:

- Intel Pentium processor or equivalent AMD
- 2GB RAM
- 1GB hard disk space for SpecView and related utilities
- Additional disk space for datalogging
- Display adapter capable of operating at 1024 x 768 pixels and at least 16-bit color
- 2 USB ports
- A CD-ROM drive